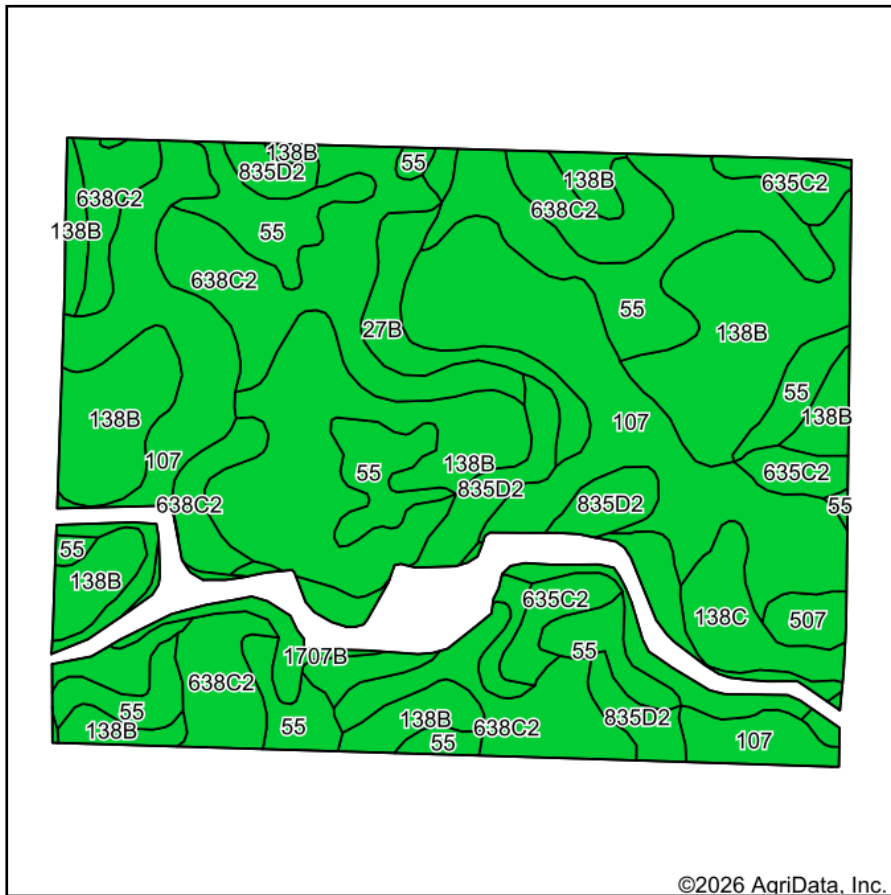
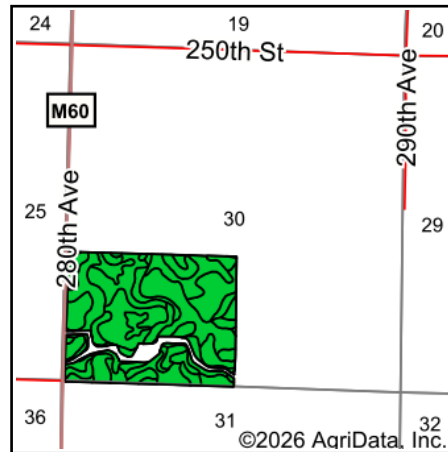


# Soils Map



Soils data provided by USDA and NRCS.



State: **Iowa**  
 County: **Dickinson**  
 Location: **30-98N-35W**  
 Township: **Lloyd**  
 Acres: **116.58**  
 Date: **2/17/2026**

**MIDWEST LAND** & REAL ESTATE, INC  
 MANAGEMENT  
 712-262-3110

Maps Provided By:  
  
 CUSTOMIZED ONLINE MAPPING  
 © AgriData, Inc. 2025 www.AgriDataInc.com



Area Symbol: IA059, Soil Area Version: 35

Code	Soil Description	Acres	Percent of field	CSR2 Legend	Non-Irr Class *c	CSR2**	CSR	
138B	Clarion loam, 2 to 6 percent slopes	29.65	25.5%		Ile	89	73	
107	Webster clay loam, 0 to 2 percent slopes	23.73	20.4%		IIw	86	70	
638C2	Clarion-Storden complex, 6 to 10 percent slopes, moderately eroded	21.24	18.2%		IIIle	75	52	
55	Nicollet clay loam, 1 to 3 percent slopes	18.80	16.1%		Iw	89	73	
835D2	Omsrud-Storden complex, 10 to 16 percent slopes, moderately eroded	7.74	6.6%		IVe	53	35	
1707B	Delft-Terril complex, 1 to 5 percent slopes	4.44	3.8%		IIw	78	59	
635C2	Belview-Storden complex, 5 to 9 percent slopes, moderately eroded	3.83	3.3%		IIIle	66	18	
27B	Terril loam, 2 to 6 percent slopes	2.93	2.5%		Ile	87	71	
138C	Clarion loam, 6 to 10 percent slopes	2.91	2.5%		IIIle	84	67	
507	Canisteo clay loam, 0 to 2 percent slopes	1.31	1.1%		IIw	84	71	
<b>Weighted Average</b>						<b>2.21</b>	<b>82</b>	<b>63.5</b>

\*\*IA has updated the CSR values for each county to CSR2.

\*c: Using Capabilities Class Dominant Condition Aggregation Method