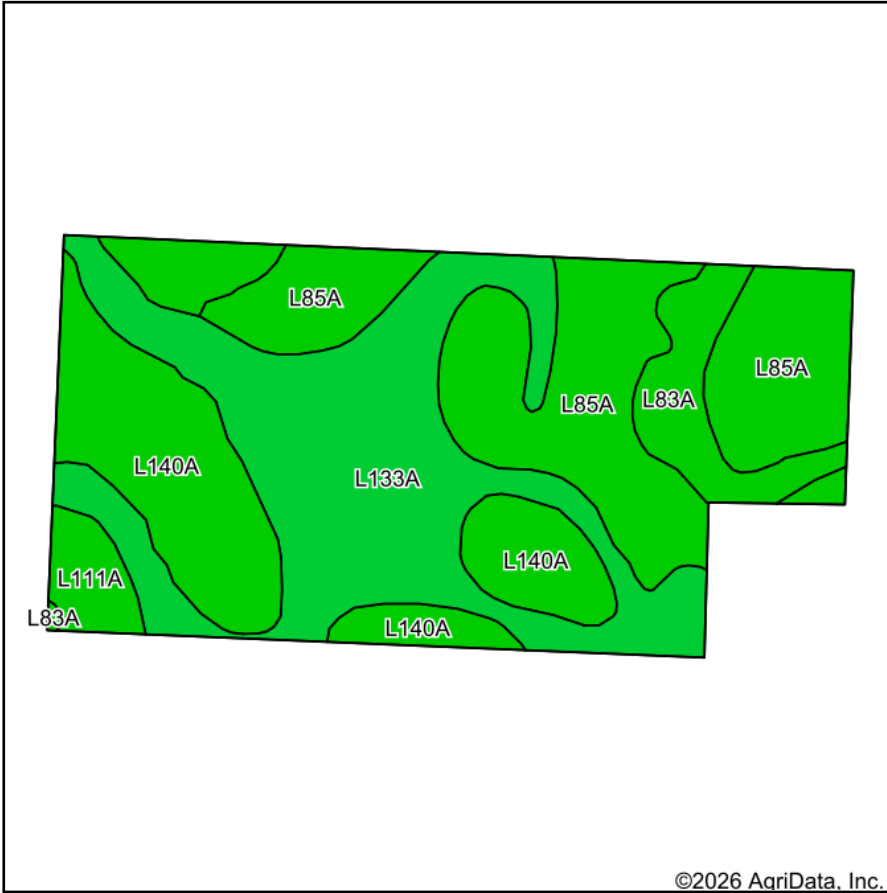
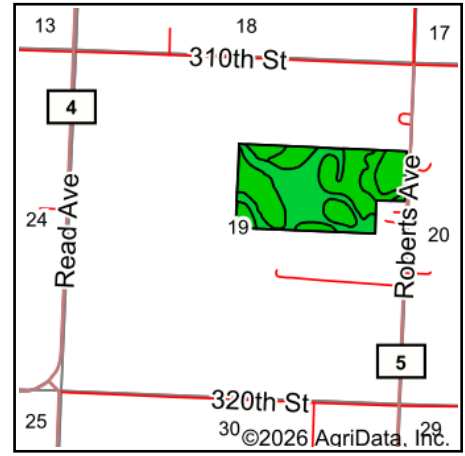


Soils Map



Soils data provided by USDA and NRCS.



State: **Minnesota**
 County: **Nobles**
 Location: **19-101N-39W**
 Township: **Indian Lake**
 Acres: **73.1**
 Date: **5/18/2026**

MIDWEST LAND & REAL ESTATE, INC.
 712-262-3110 MANAGEMENT

Maps Provided By:

 CUSTOMIZED ONLINE MAPPING
 © AgriData, Inc. 2025 www.AgriDataInc.com



Area Symbol: MN105, Soil Area Version: 24

Code	Soil Description	Acres	Percent of field	PI Legend	Non-Irr Class *c	Productivity Index
L133A	Waldorf silty clay loam, 0 to 2 percent slopes	26.19	35.9%		Ilw	85
L85A	Nicollet clay loam, 1 to 3 percent slopes	22.62	30.9%		lw	99
L140A	Ocheda silty clay loam, 1 to 3 percent slopes	17.39	23.8%		lw	97
L83A	Webster clay loam, 0 to 2 percent slopes	4.70	6.4%		Ilw	93
L111A	Nicollet silty clay loam, 1 to 3 percent slopes	2.20	3.0%		le	100
Weighted Average					1.42	93.2

*c: Using Capabilities Class Dominant Condition Aggregation Method